

108 DAYS ONLINE COACHING-(DAY 59)-[24-04-2020~FRIDAY]

DATA INTERPRETATION



NAME OF THE CANDIDATE *

M4

PLACE OF THE CANDIDATE *

PATHANAMTHITTA

WHAT'S APP NO (JOINED IN THE SAI EDN COACHING PLATFORM) *

9

PLEASE WATCH THE ONLINE CLASSES CAREFULLY AND NOTE DOWN IT IN YOUR DIARY BEFORE SENDING THE ANSWERS

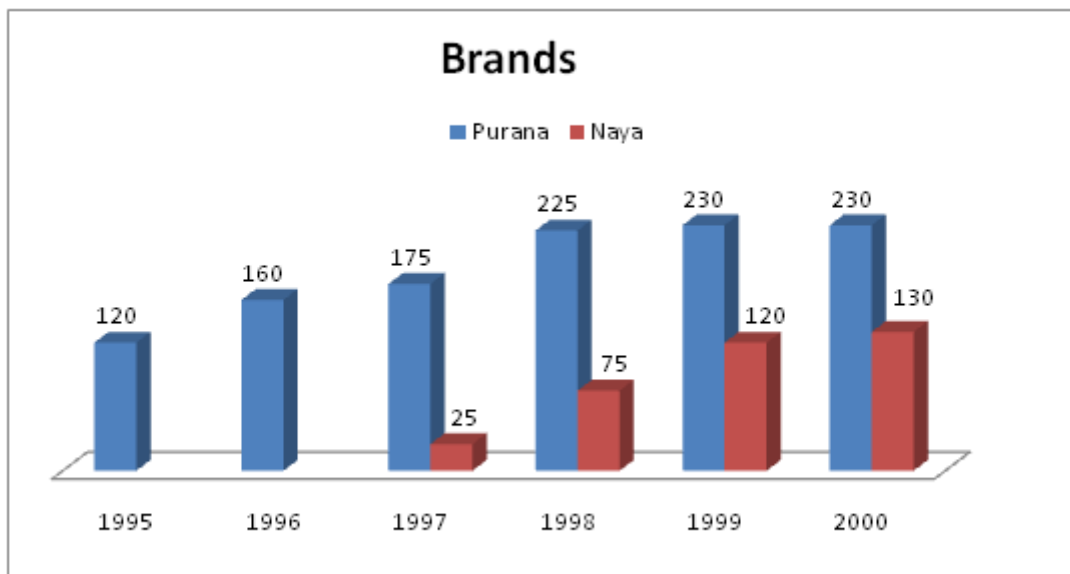
https://youtu.be/_q37Twqa6Fk
https://youtu.be/xhwFkwSol_c
<https://youtu.be/RHfsmeQgTwg>
<https://youtu.be/Kx2Qn9UiGPI>
<https://youtu.be/m40AqH1a6FI>

Purana and Naya two brand of mixer-grinder available in the market. Puarana was introduced in 1990 and Naya was introduced in 1997. For both brands, 20% of the mixer-grinder bought in a particular year are disposed off as junk exactly two year later. It is known that 10 Purana mixer-grinder were disposed off in 1997. The following chart show the operation from 1995 to 2000, as at end of the year.

STUDY THE DATA AND ANSWER THE QUESTIONS FROM(1-3)

1. How many Naya mixer- grinder disposed off by end of 2000? *

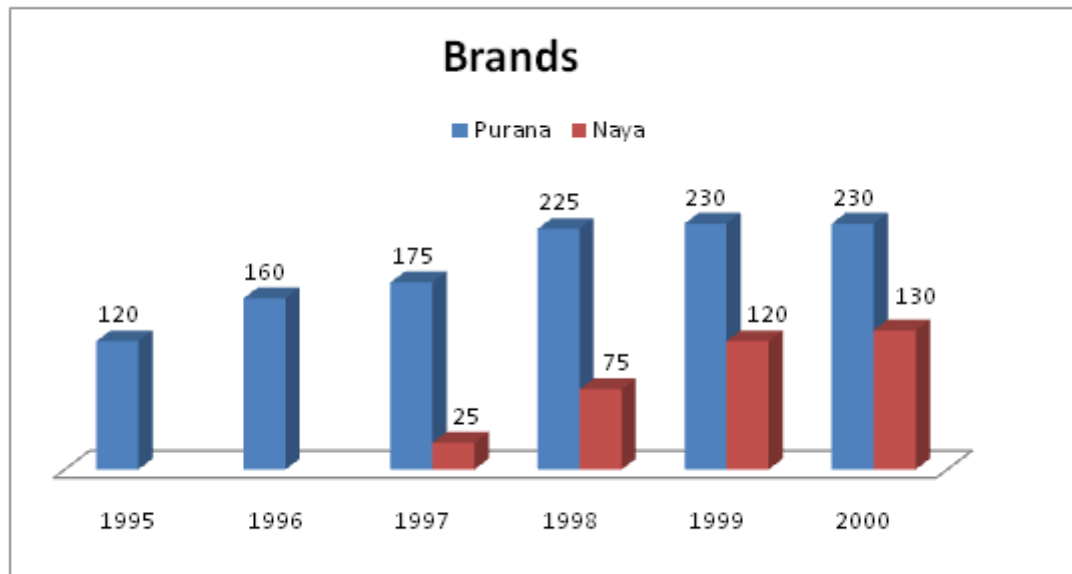
1 point



- 10
 15
 22
 30

2. How many Naya mixed- grinders were purchased in 1999? *

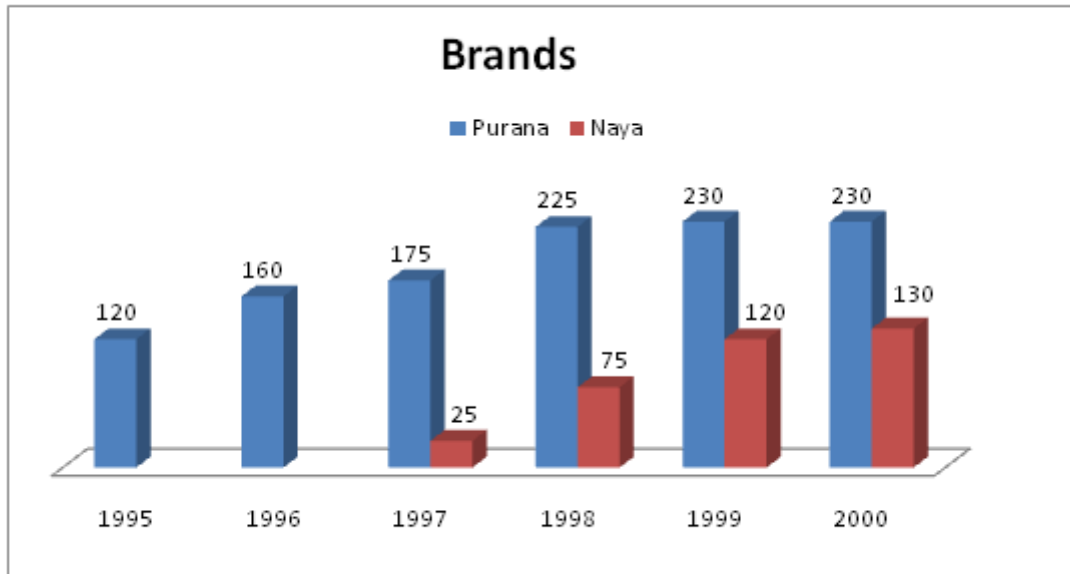
1 point



- 45
- 50
- 55
- 64

3. How many Purana mixed-grinder disposed in 2000? *

1 point

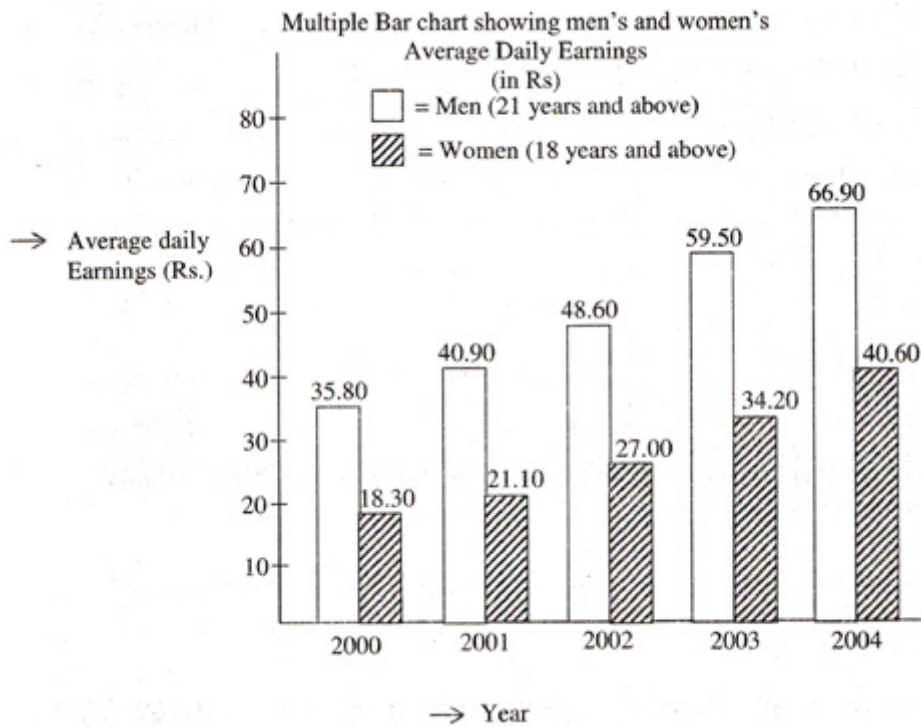


- 0
- 5
- 6
- cannot be determined

The following is a multiple bar chart showing man's and women's average daily earnings in certain industries.

STUDY THE CHART AND ANSWER THE QUESTIONS(4-6)

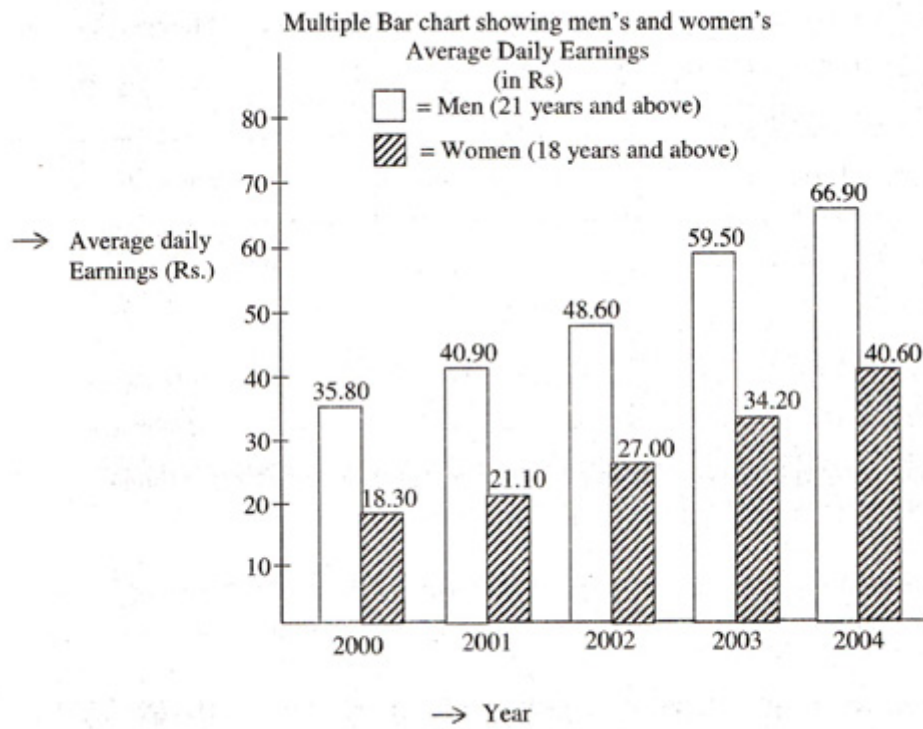
4. In which year is the percentage increase in the average daily earnings of men over the preceding year, the maximum? * 1 point



- 2001
- 2002
- 2003
- 2004

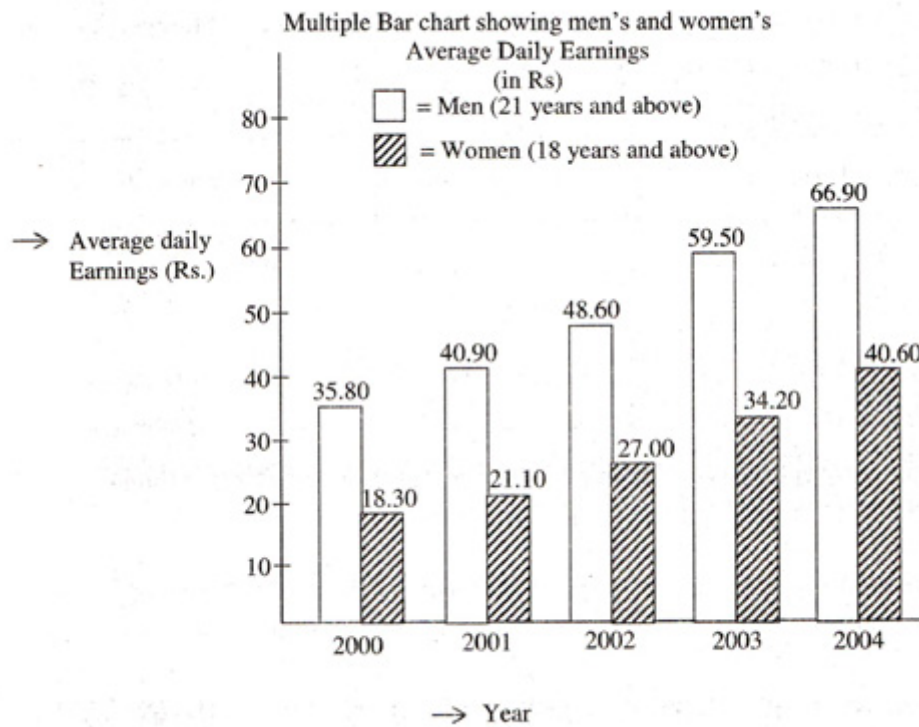
5. The difference between the average daily earnings of men and women over successive years: *

1 point



- increase
- decrease
- remains the same
- none of these

6. In which year is the ratio of man's average daily earnings to women's average daily earnings is the highest? * 1 point

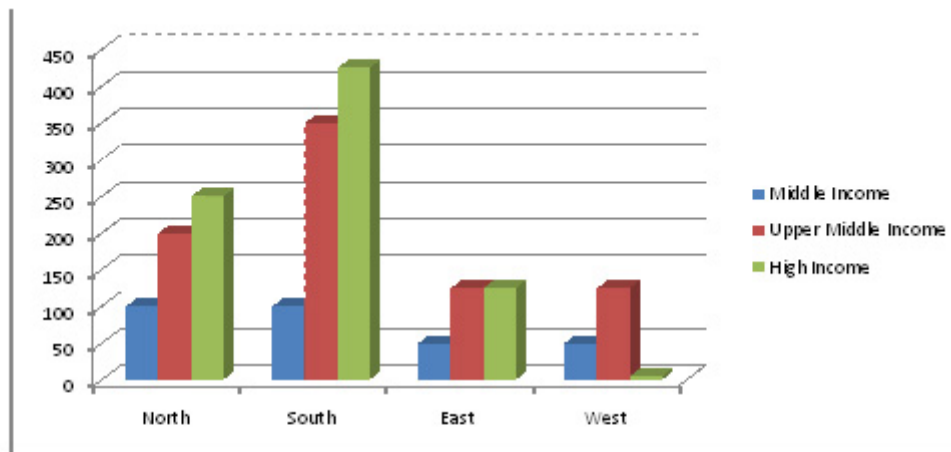


- 2002
- 2004
- 2003
- 2001

The following bar chart gives the growth percentage in the number of households in middle, upper-middle and high-income categories in the four regions for the period between 1987-88 and 1994-95.

STUDY THE DATA AND ANSWER THE FOLLOWING QUESTIONS(7-10)

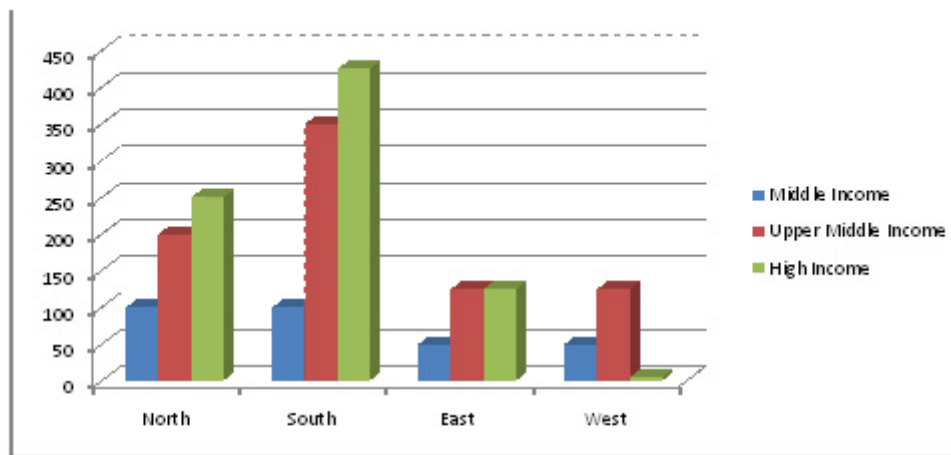
7. Which region showed the highest growth in number of households in all the income categories for the period? * 1 point



	No. of Households In 1987-88 (in thousands)	Average Household Income 1987-88	Growth in average income 1994-95 over 1987-88
Middle Income	40	Rs. 30,000	50%
Upper Income	10	Rs. 50,000	60%
High Income	5	Rs. 75,000	90%

- NORTH
 SOUTH
 EAST
 WEST

8. What was the total household income in northern region for upper middle class? * 1 point

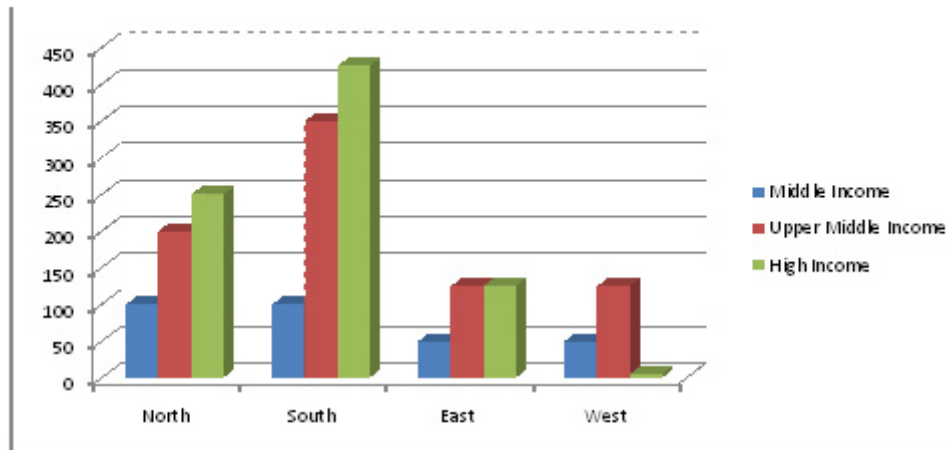


	No. of Households In 1987-88 (in thousands)	Average Household Income 1987-88	Growth in average income 1994-95 over 1987-88
Middle Income	40	Rs. 30,000	50%
Upper Income	10	Rs. 50,000	60%
High Income	5	Rs. 75,000	90%

- Rs 50 Lakh
- Rs 500 million
- Rs 300 million
- cannot be determined

9. What is the percentage increase in total number of households for the northern region(upper-middle) over the given period? *

1 point

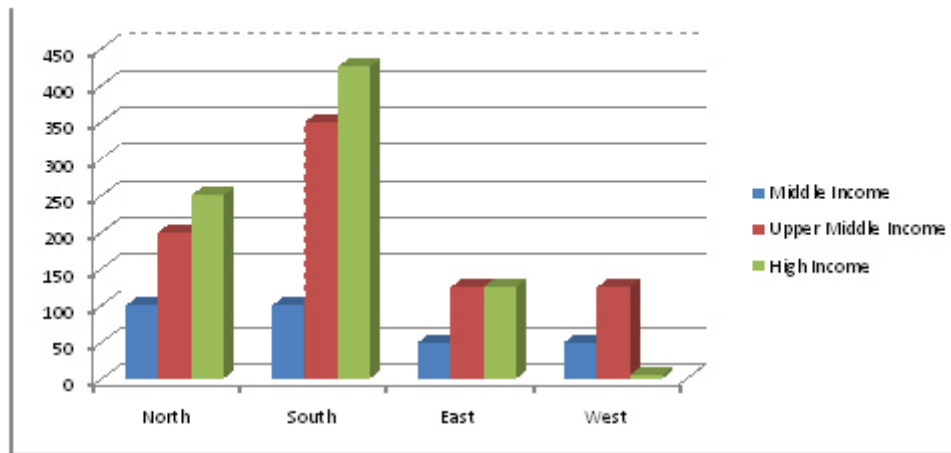


	No. of Households In 1987-88 (in thousands)	Average Household Income 1987-88	Growth in average income 1994-95 over 1987-88
Middle Income	40	Rs. 30,000	50%
Upper Income	10	Rs. 50,000	60%
High Income	5	Rs. 75,000	90%

- 100%
 200%
 240%
 300%

10. What was the average income of the high income group in 1987-88? *

1 point



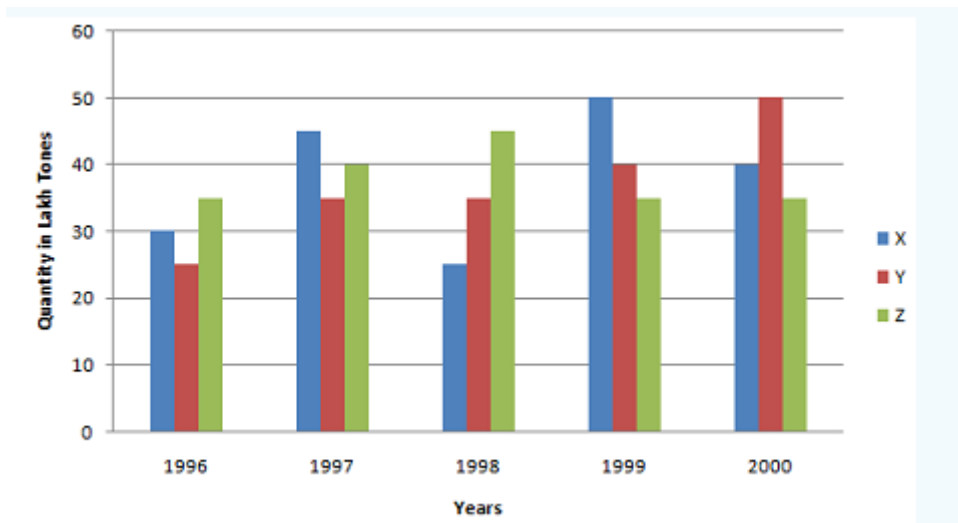
	No. of Households In 1987-88 (in thousands)	Average Household Income 1987-88	Growth in average income 1994-95 over 1987-88
Middle Income	40	Rs. 30,000	50%
Upper Income	10	Rs. 50,000	60%
High Income	5	Rs. 75,000	90%

- Rs 75000
- Rs 50000
- Rs 300000
- Rs 225000

Production of paper (in lakh tonnes) by three companies X, Y and Z over the years. .

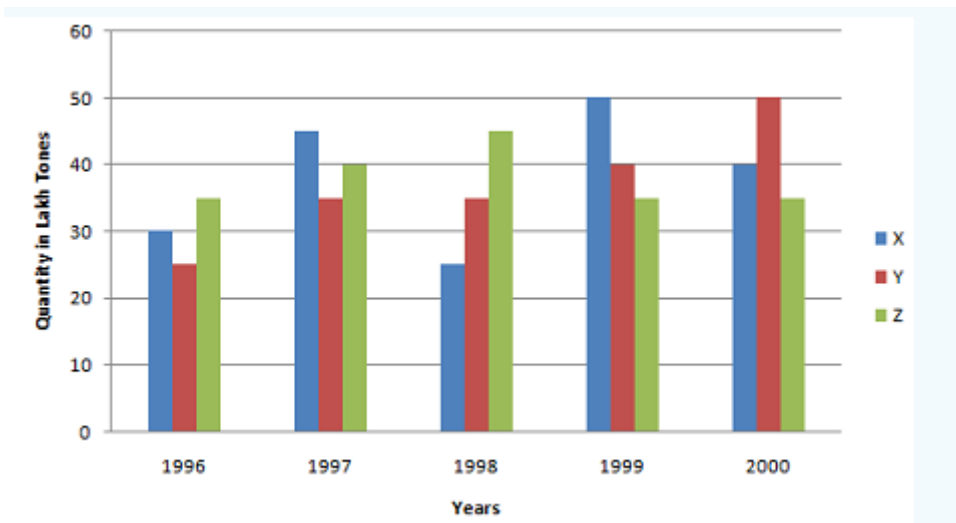
Study the graph and answer the questions (11-15)

11. What is the difference between the production of company Z in 1998 and company Y in 1996? *



- 2 lakh tons
- 20 lakh tons
- 20000 tons
- none of these

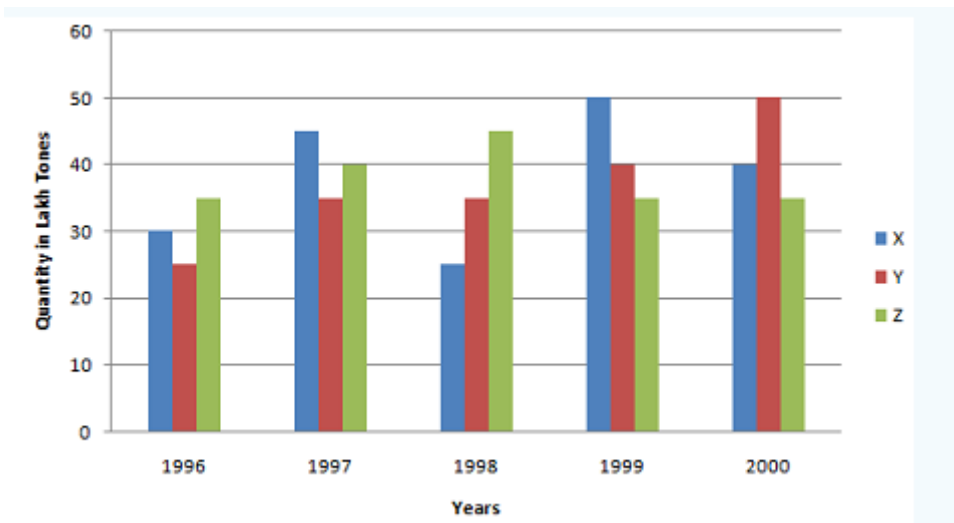
12. What is the ratio of the average production of company X in the period 1998-2000 to the average production of company Y in the same period? * 1 point



- 1:1
- 15:17
- 23:25
- 27:29

13. What is the percentage increase in the production of company Y from 1996 to 1999? *

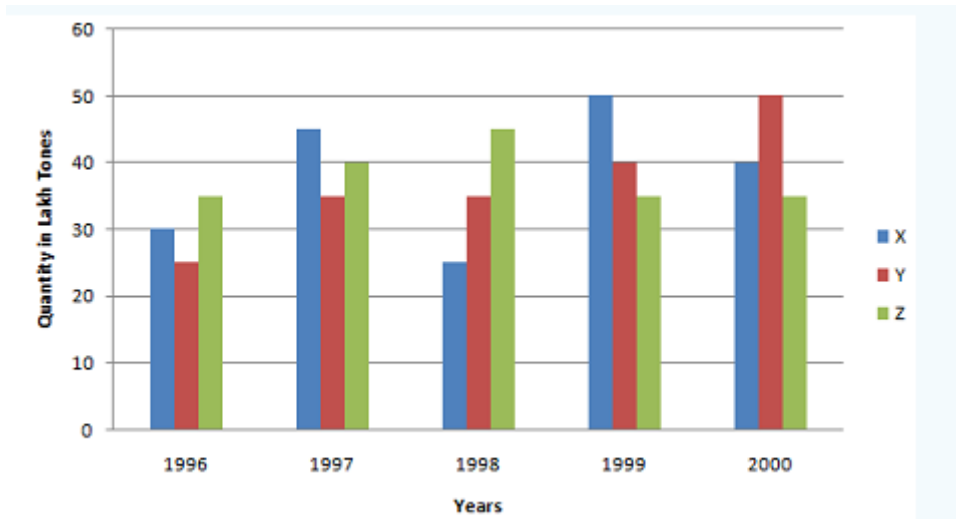
1 point



- 30%
- 45%
- 50%
- 60%

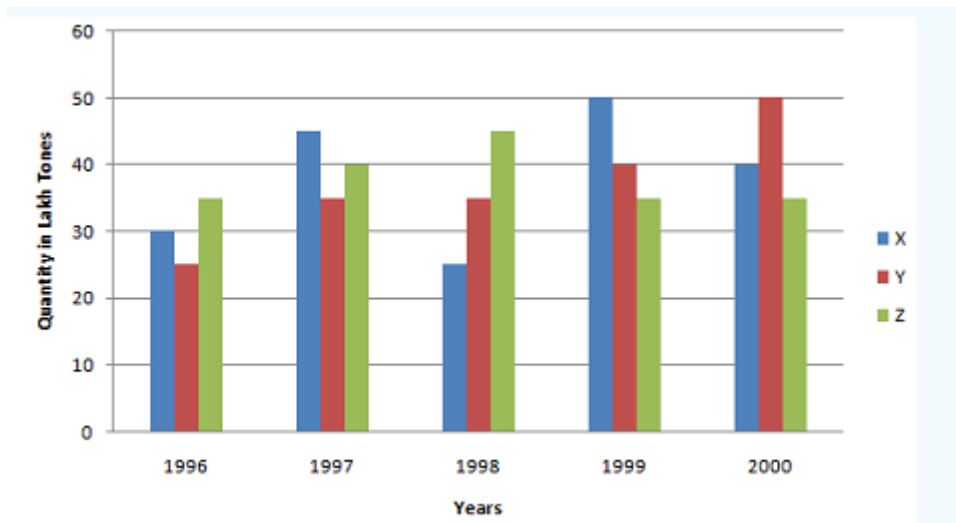
14. The average production for five years was maximum for which company? *

1 point



- X
- Y
- X AND Y BOTH
- X AND Z BOTH

15. In which year was the percentage of production of company Z to the production of company Y the maximum? * 1 point

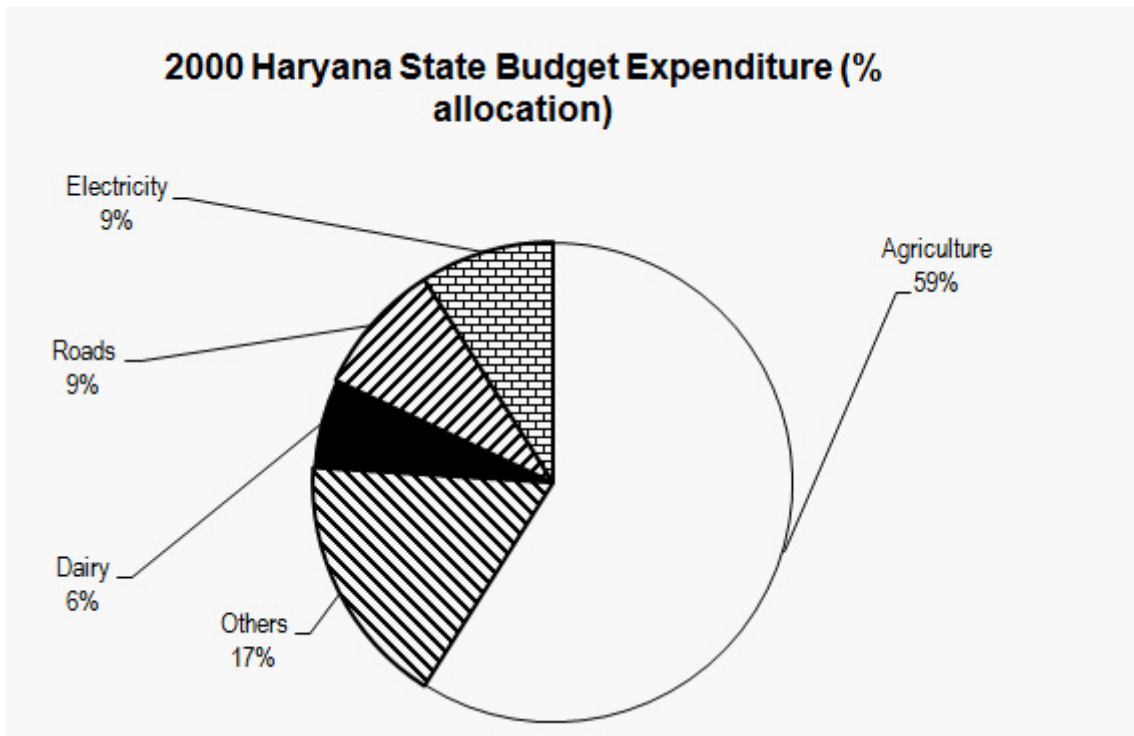


- 1996
- 1997
- 1998
- 1999

Go through the following pie chart and answer the questions given below that.
FOR QUESTIONS(1620)

16. Approximately how many degrees should be there in the central angle of the sector for agriculture expenditure? *

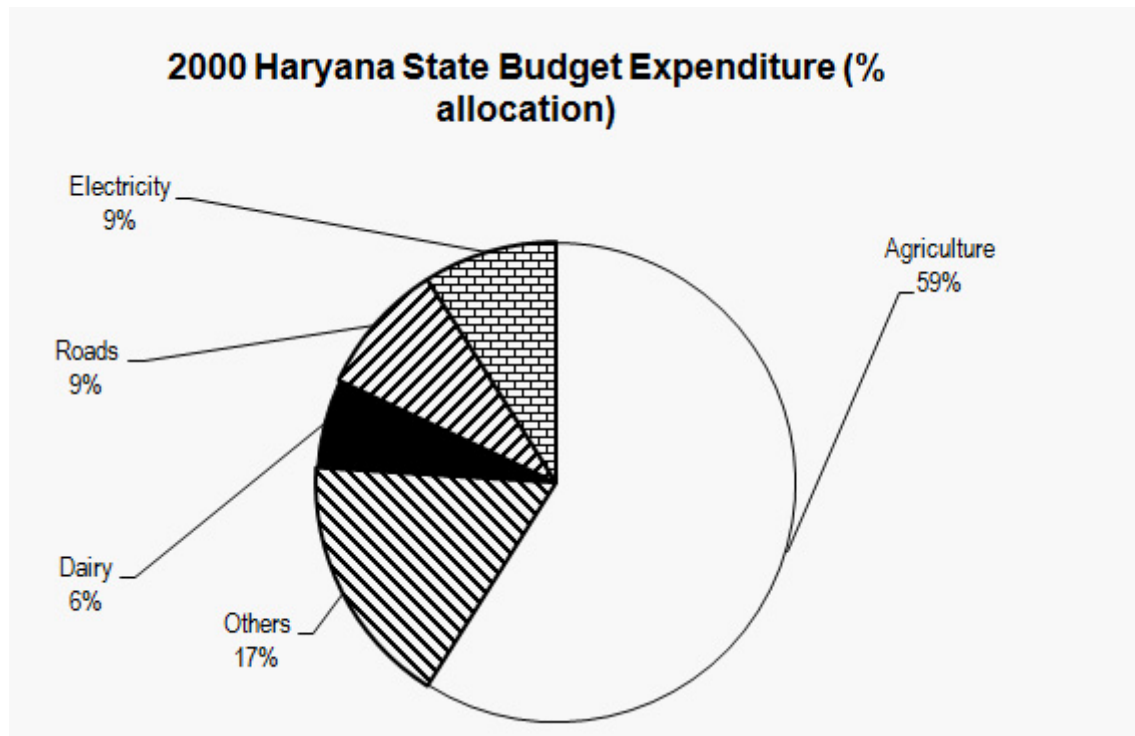
1 point



- 220
- 213
- 210
- 208

17. In Haryana, in 2000, a total expenditure of Rs. 120 was incurred. Approximately how many million did the Haryana government spend on roads? *

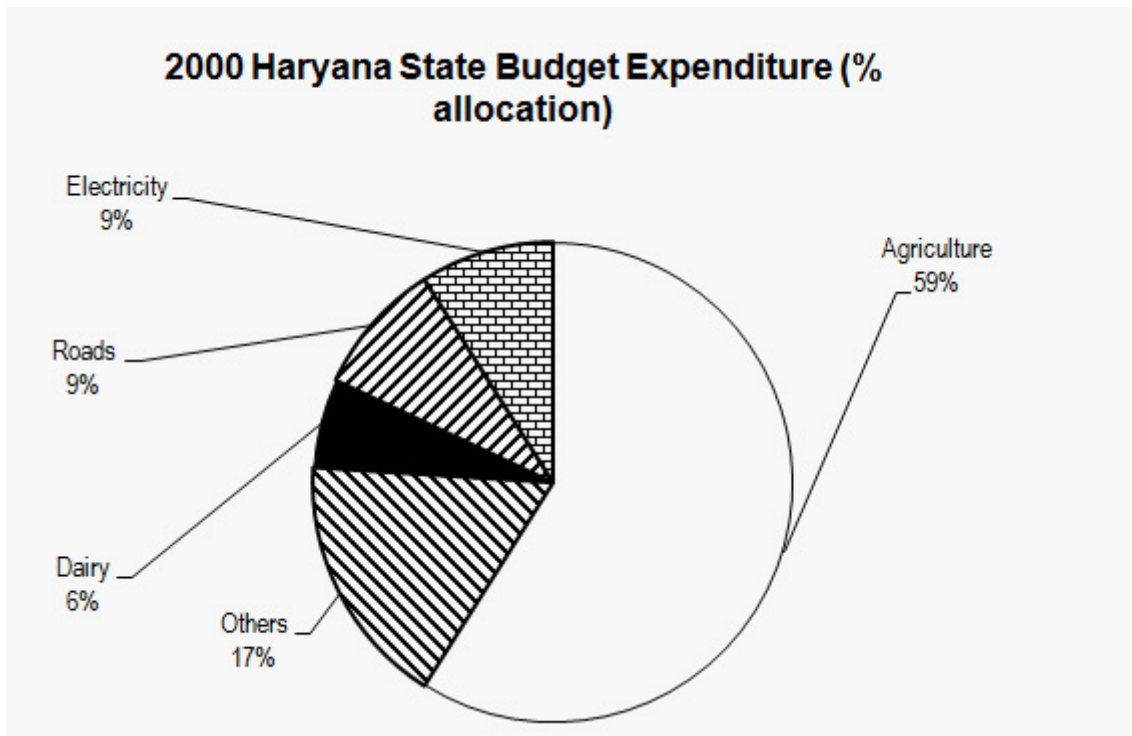
1 point



- 15.4
- 2.20
- 10.8
- 12

18. If Rs. 9 were spent in 2000 on Dairy, what would have been the total expenses in that year in million? *

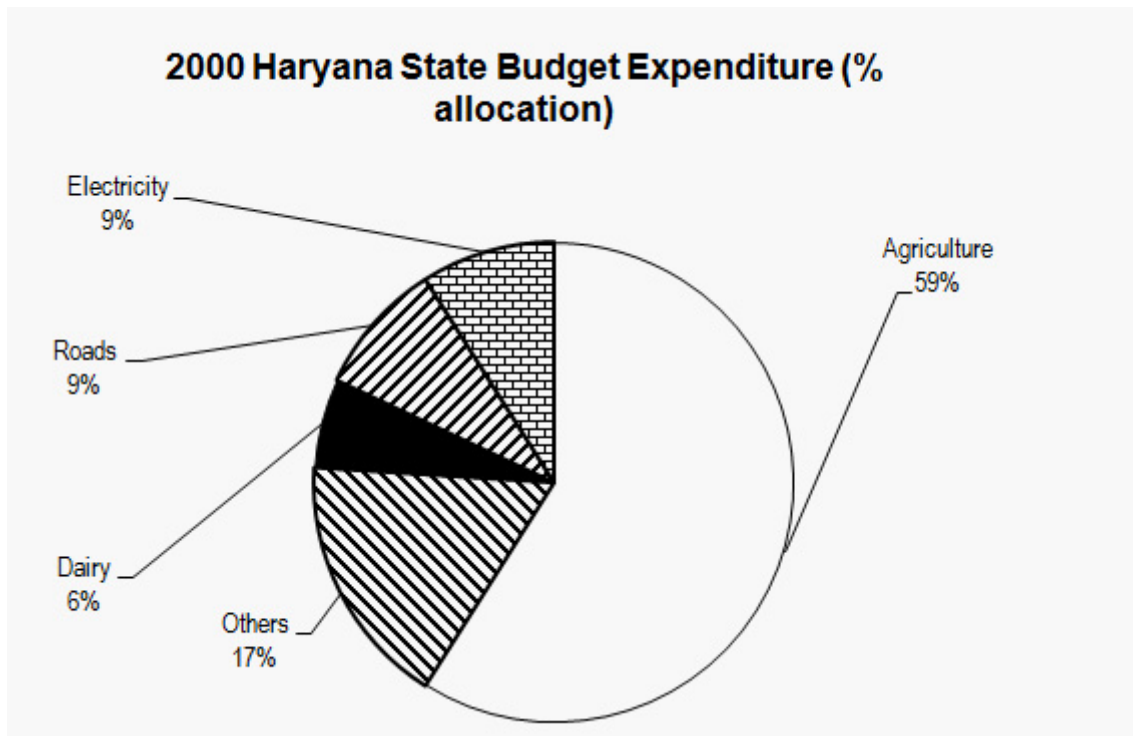
1 point



- 150
- 140
- 160
- 130

19. In 1999, Haryana spent 11% of all its expenses on Roads. “Did Haryana spend more on Roads expenditure in 1999 than in 2000?” To answer the question, we *

1 point

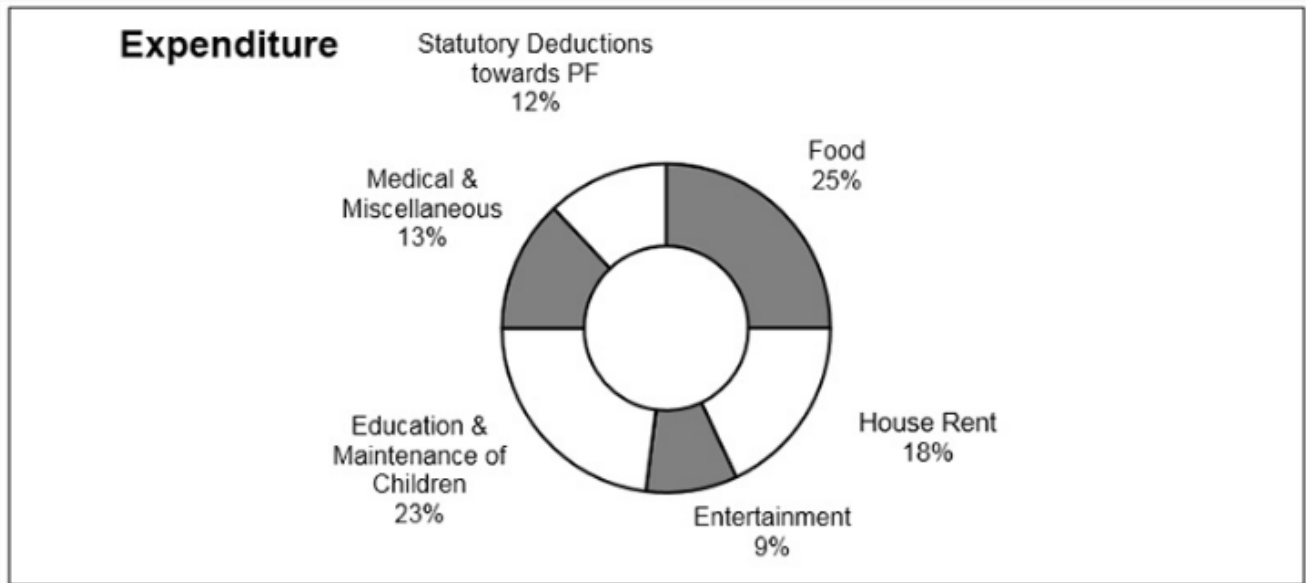


- Do not require any additional data
- Require to know the total amount spent in each year.
- Require the exact %age break-up of the various items of expenses in 1999.
- Require the expenditure on dairy in both the years.

Analyze the following pie chart and answer the questions given below. Given is the distribution of the monthly family budget of a person X. The total earnings of person X are Rs. 3,600 per month basic, plus 10% as transport and meals allowance on the monthly salary.

for questions 20-23

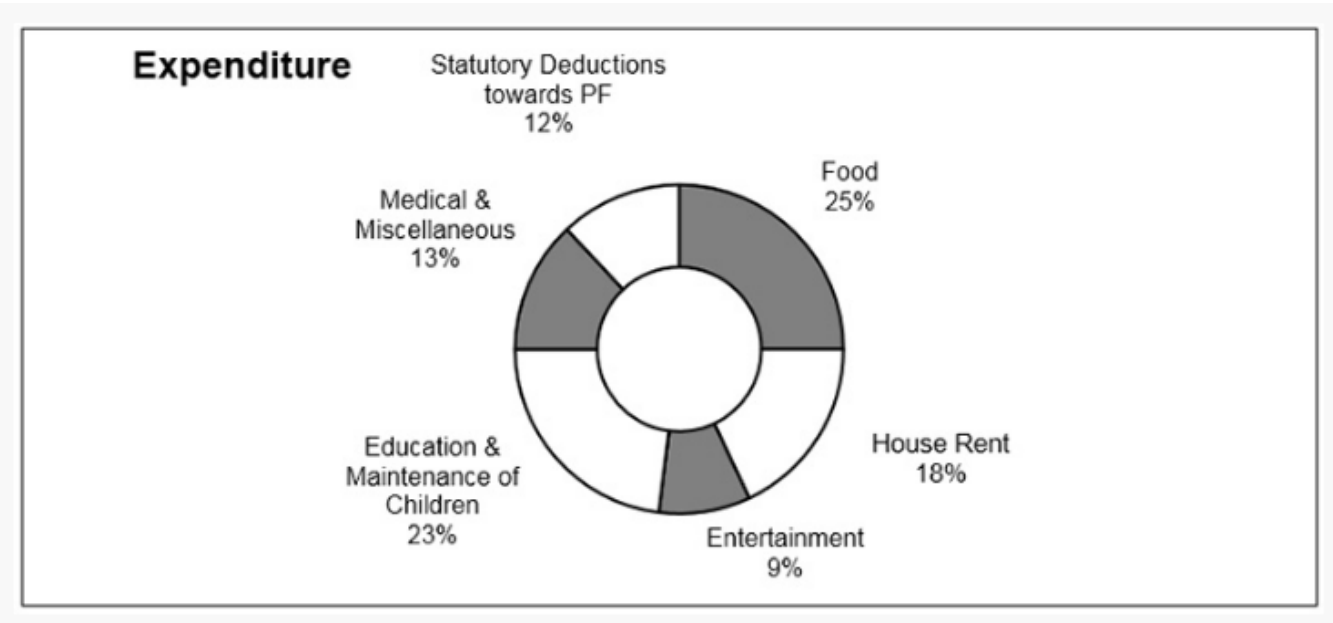
20. Calculate the amount of expenditure on Education and Maintenance per month, if a person X pays 23% of its total earnings as Education and Maintenance of children? * 1 point



- 910.8
- 900
- 920
- 915

21. What is the medical and miscellaneous expenditure per annum (in Rs)? *

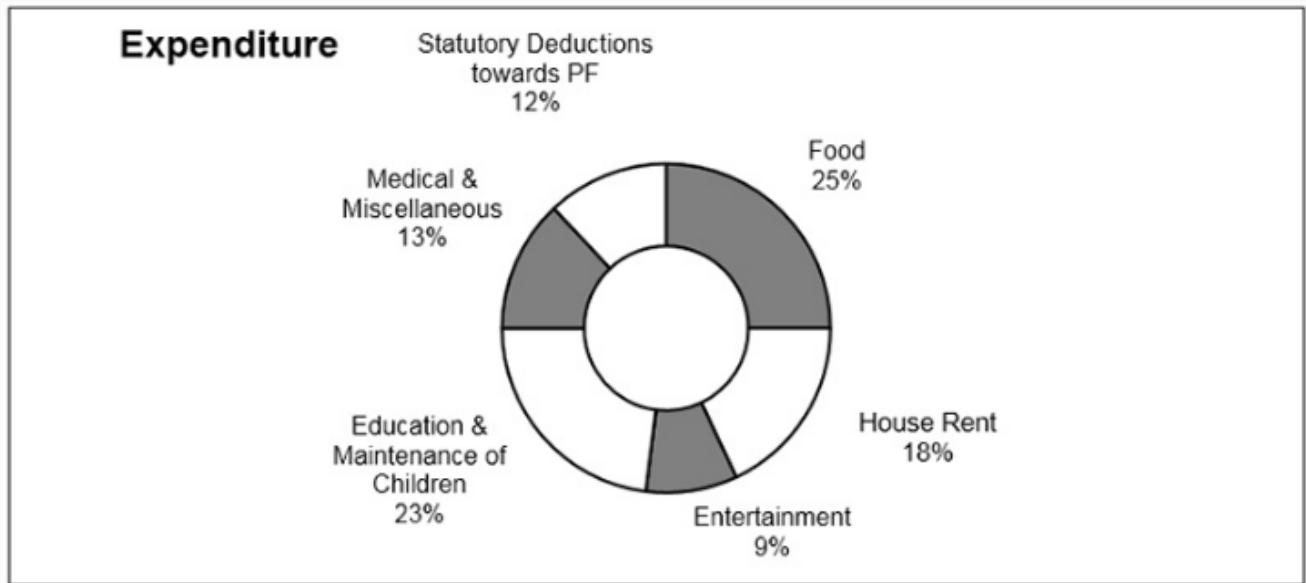
1 point



- 4854
- 5330.16
- 6177.6
- 4485.6

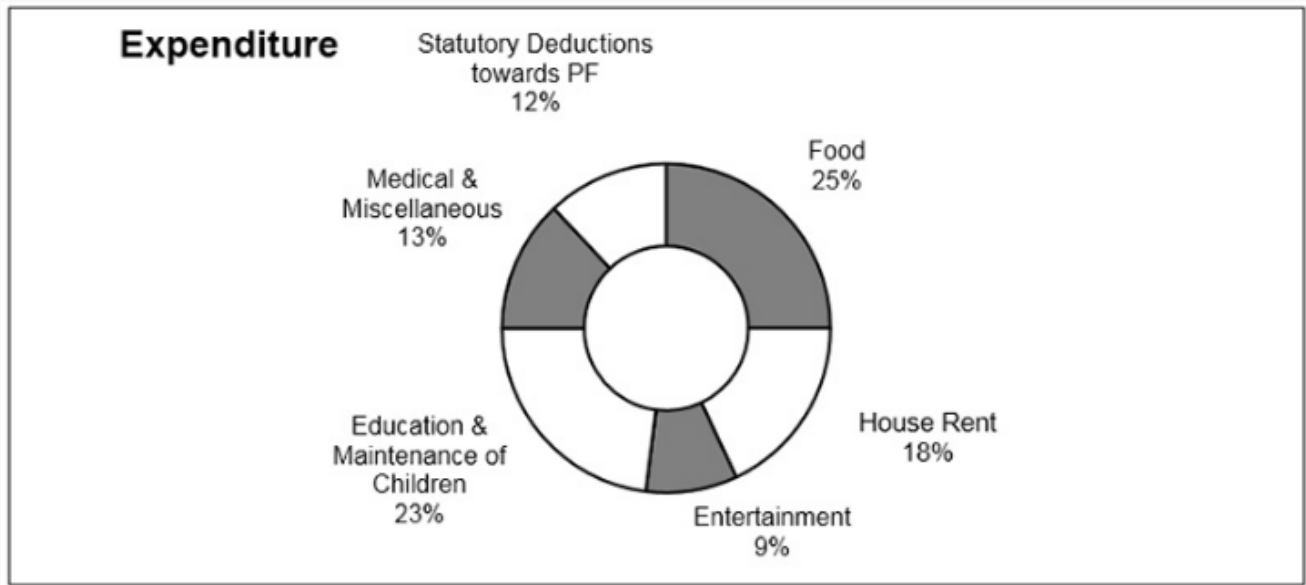
22. What is the approximate earning left of person X (in Rupees) per month after deducting payment of education and maintenance? *

1 point



- 3049.2
- 2591
- 2355
- 2350

23. What is the total amount per month the family spends on house rent and statutory deductions towards PPF expenses? * 1 point



- 1100
- 1259
- 1188
- 1140

THANK YOU!!!

This content is neither created nor endorsed by Google.

Google Forms